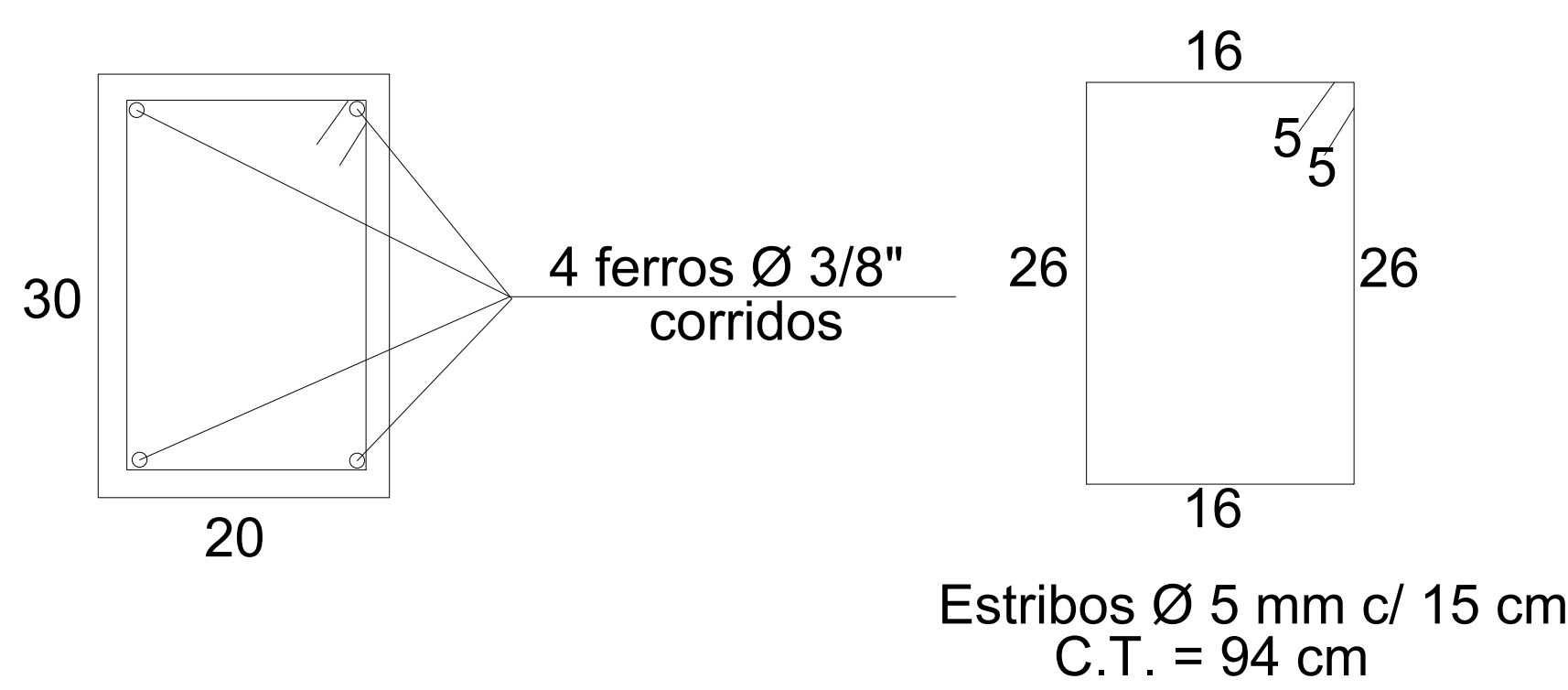
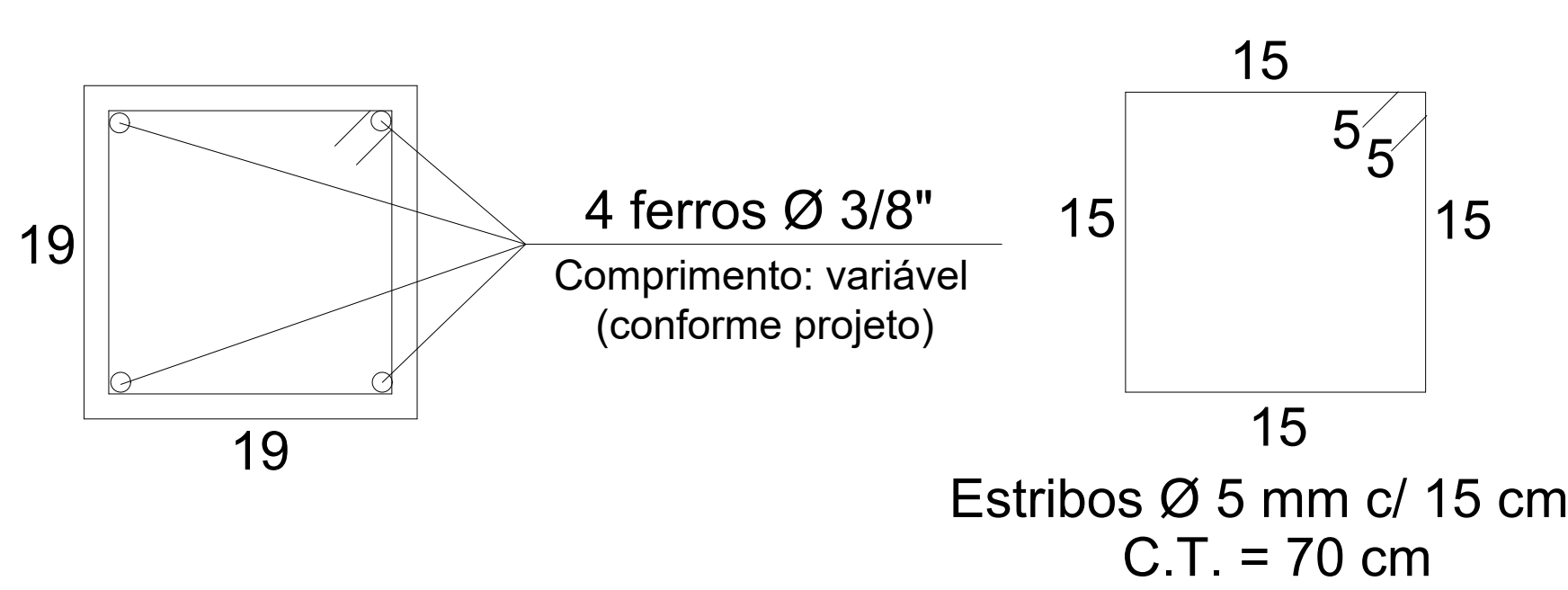


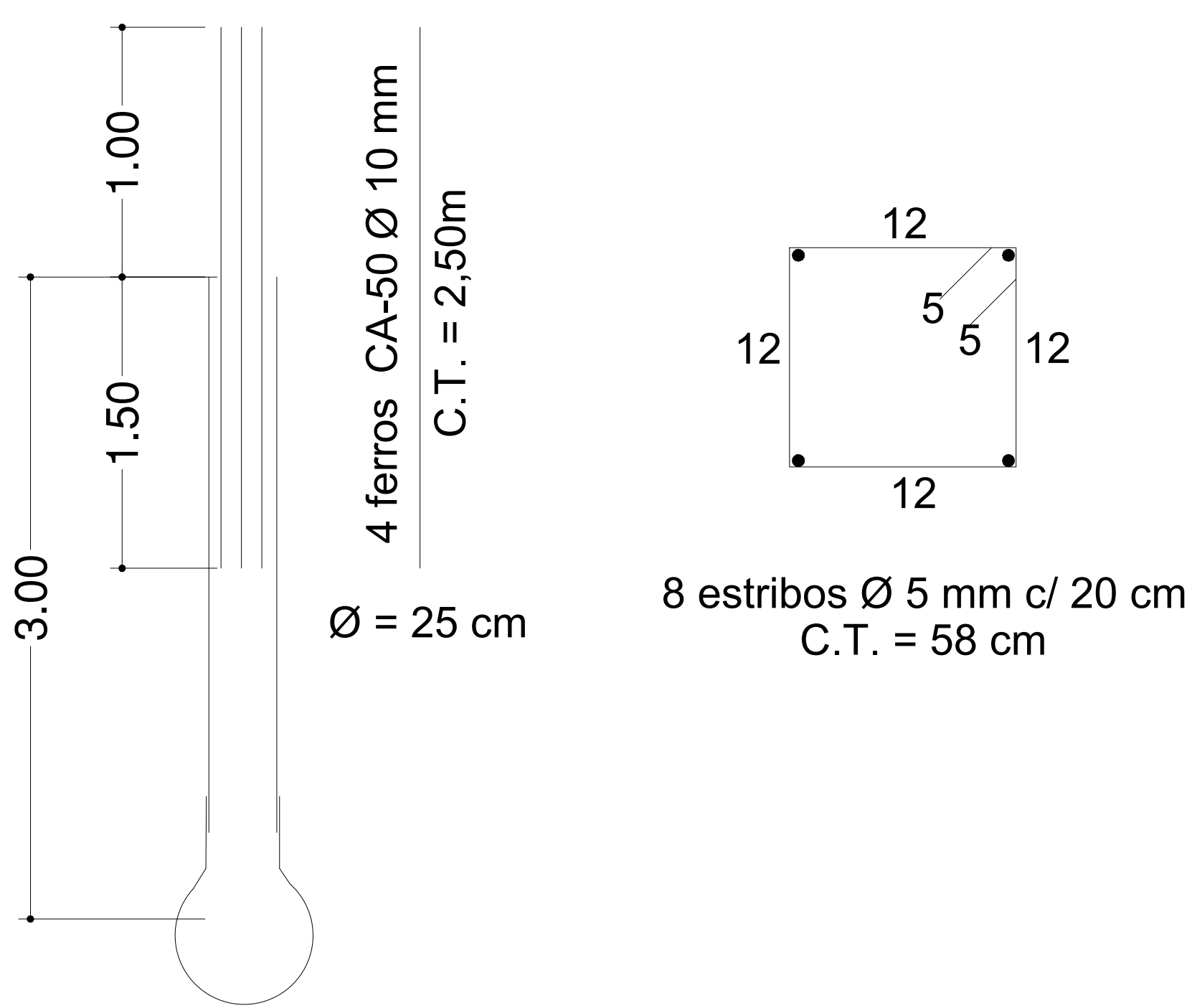
Viga Baldrame (20 x 30)



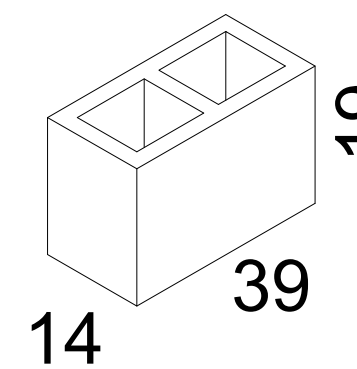
Pilares (19x19)



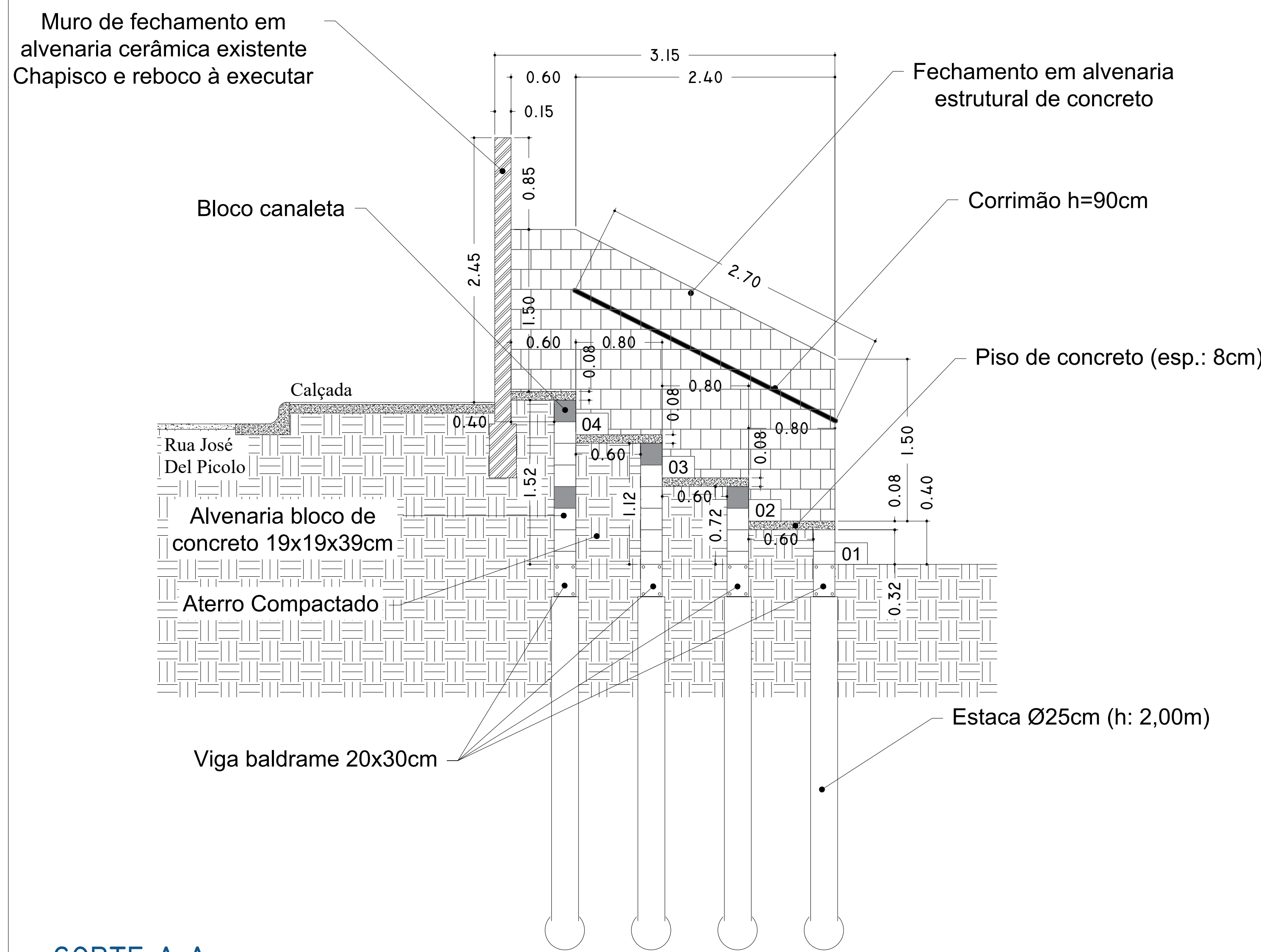
Estacas Ø 25cm



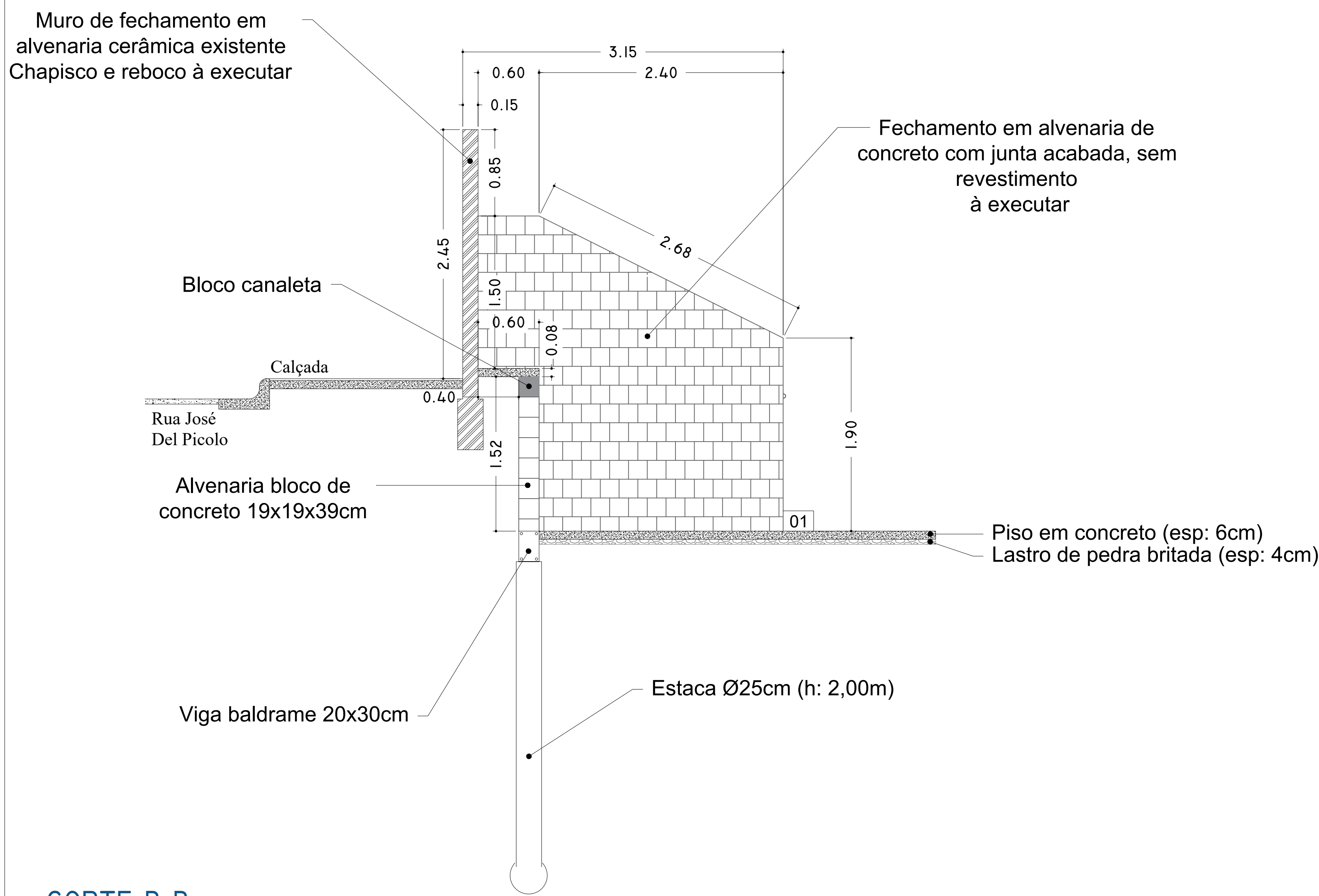
Bloco vazado de concreto 14x19x39 cm



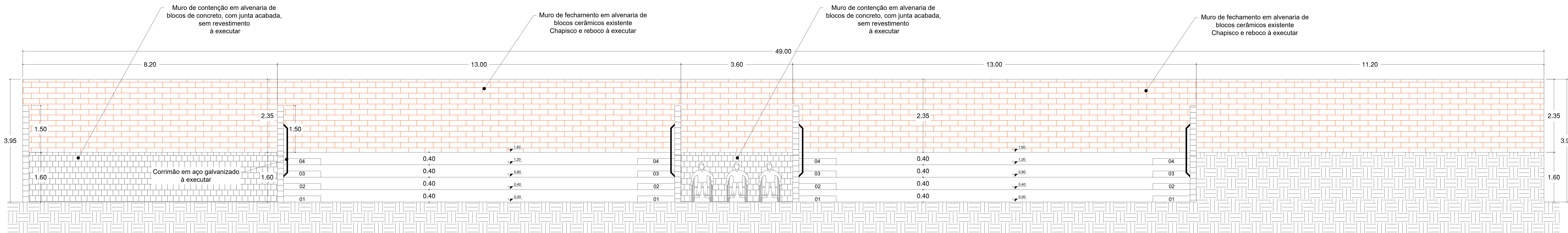
DETALHAMENTO
S/E



CORTE A-A
S/E

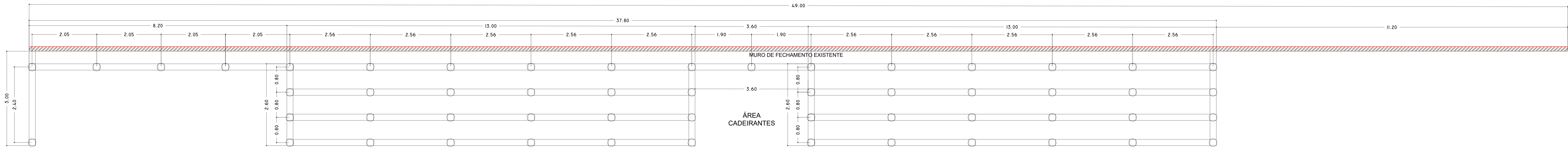
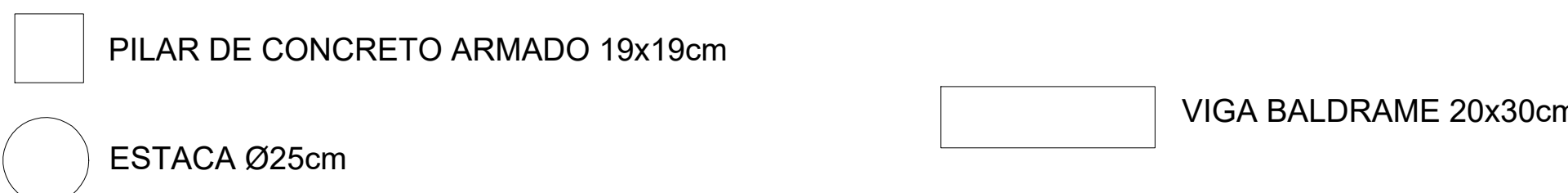


CORTE B-B
S/E



VISTA A-A
ESC 1:50

LEGENDA



DETALHAMENTO
ESC 1:50



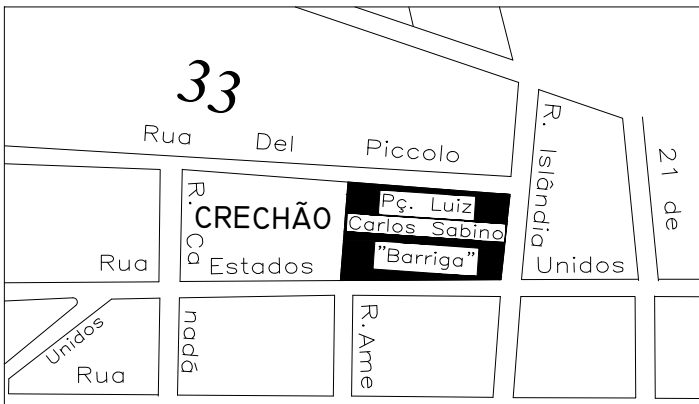
S.M.O. - SECRETARIA MUNICIPAL DE OBRAS

FRANCIA
02/02

PROJETO
CONSTRUÇÃO DE ARQUIBANCADA NO CAMPO DE FUTEBOL DA
PRAÇA LUIZ CARLOS SABINO
DETALHAMENTOS, VISTA E CORTES
LOCAL
RUA ISLÂNDIA
BAIRRO JARDIM KLAYTON
CIDADE BIRIGUI - S.P.

PREFEITURA MUNICIPAL DE BIRIGUI -SP.
LEANDRO MAFFEIS MILANI
CONSTRUTIVO

SITUAÇÃO: Sem obra



RESPONSÁVEIS:

PREFEITO MUNICIPAL
LEANDRO MAFFEIS MILANI

SECRETÁRIO MUNICIPAL DE SUPORTE
RONI PLÁIO MANTOVAN

SECRETÁRIO MUNICIPAL DE OBRAS
ALEXANDRE JOSÉ SABINO LASILA

AUTOR DO PROJETO
INGRID EVELIN
ENGENHEIRA CIVIL
CREA 134948/SP

Data: 27/03/2024
Assinatura: Ingrid Evelin Romera

DESPACHOS.